

OPTION	Building Changes	Estimated Capital Construction Cost	Estimated District Share after State Building Aid	Estimated Net Annual Savings	Grade Configuration
Gray	Closes: Center Street, Gardner Road	\$12,125,583	\$3,078,685	\$1,510,908	PreK-4 at Ridge Road, Big Flats, and current Intermediate School Building; 5-6 at the Middle School Building; 7-12 at the High School; District Offices at Center Street

<p align="center"><i>Pre-K through 4 at Big Flats, Ridge Road, and Sing Sing Intermediate Grades 5-6 at Sing Sing Middle Grades 7-12 at the high school. District offices and programs now at Broad Street housed at Center Street.</i></p>					
<b>RATIONALE:</b>					
<ul style="list-style-type: none"> <li>retains three neighborhood schools for district's youngest students; maintains the 5-6 Intermediate School concept; provides a program without the overlapping need for elementary and secondary staff certification</li> </ul>					
<p align="center">Pupil Capacity Available (Benchmarked to local class size goals and the instructional program offerings of 2012-2013)</p>					
Location (Current enrollment)	Pupil Operating Capacity	Estimated Enrollment In 2015-16	Est. Pupil Capacity Use with this Option in 2015-2016	<i>Estimated Enrollment In 2017-2018</i>	<i>Est. Pupil Capacity Use with this Option in 2017-2018</i>
<b>Ridge Road (367)</b>	475	<b>1368-1492</b>	Pre-K-4	<b>1378-1526</b>	<b>80.5%-89.1%</b>
<b>Center Street (307)</b>	0				
<b>Gardner Road (440)</b>	0				
<b>Big Flats (437)</b>	537		Pre-K-4		
<b>Intermediate (666)</b>	700		Pre-K-4		
<b>Total K-4:(1551) Plus 3 sections of Pre-K</b>	<b>1712 PLUS Pre-K</b>		<b>79.9%-87.1%</b>		
<b>Middle School 7-8 (653)</b>			5-6		
<b>Total 5-6: (675)</b>	<b>742</b>	<b>662</b>	<b>89.2%</b>	<b>662</b>	<b>89.2%</b>
<b>High School</b>			7-12		
	1594 Plus est. 225 (9 x 25) from relocation of district offices minus 2 rooms rented to the BOCES for special education, -50				
<b>Total 7-12:</b>	<b>1769</b>	<b>2039</b>	<b>115.3%</b>	<b>2054</b>	<b>116.1%</b>



<b>OPPORTUNITIES AND CHALLENGES</b>	
<i>Pre-K through 4 at Big Flats, Ridge Road, and Sing Sing Intermediate Grades 5-6 at Sing Sing Middle Grades 7-12 at the high school. District offices and programs now at Broad Street housed at Center Street.</i>	
<b>OPPORTUNITIES:</b>	<b>CHALLENGES:</b>
✓ Maximizes secondary staffing	✓ Underutilization of IS/MS complex
✓ Maintains three neighborhood schools	✓ Requires construction at HS
✓ Fewer traveling teachers	✓ Moving District Offices to CS
✓ Maintains 5/6 concept (at IS)	✓ Relocating rental space/programs to CS
✓ Maintains 7/8 concept (at high school)	✓ Redistricting of students
✓ Help diminish class size inequity with three attendance zones instead of four	✓ “mothballing” of potentially unused buildings
✓ Possibly condense 7-12 bus runs	✓ Possible community resentment at closing 2 elementary campuses and not the other 2
✓ Grade 8 pupils at the HS provides them with more opportunities for extracurricular activities	✓ How do you provide food services in the larger campuses?
<p>✓ There are 69 classroom instructors now serving grades K-4. This Option requires 67 (2 fewer) to deliver the program and meet the class size goals of the district assuming the high enrollment projection. The 27 number of classroom instructors now serving grades 5-6 is unchanged.</p> <p>✓ There are 12 building administrators now serving grades K-12. It is suggested that this Option will require <i>minimally</i> 8 (4 fewer):</p> <ul style="list-style-type: none"> <li>1 at Ridge Pre-K-4</li> <li>1 at Big Flats Pre-K-4</li> <li>2 at the Sing Sing campus Pre-K-4 and 5-6</li> <li>4 at the High School 7-12</li> </ul>	✓ Redesign of existing transportation routes to meet the expectations the district has for pupil transportation.
<b>ADDITIONAL OPPORTUNITIES AND CHALLENGES LISTED BY THE COMMUNITY FOCUS GROUP ON OCTOBER 26, 2013</b>	
<b>OPPORTUNITIES:</b>	<b>CHALLENGES:</b>
<ul style="list-style-type: none"> <li>✓ Enrichment opportunities and credit-bearing classes for grade 8 pupils</li> <li>✓ 85 to 90% space utilization rate allows flexibility and opportunities</li> <li>✓ Will have ‘community’ schools</li> <li>✓ Grades 7 and 8 together, but separate from grades 9-12</li> </ul>	<ul style="list-style-type: none"> <li>✓ Should grade 6 be with grade 7?</li> <li>✓ Need to ensure that Pre-K classes at Broad Street can be accommodated</li> <li>✓ Closed schools might impact community activities; lost facilities for community basketball and other community uses</li> <li>✓ Possible social problems of 7-12 in one building; possibility of a separate wing for grades 7-8</li> <li>✓ Busing of grades 7-12 on the same bus run?</li> <li>✓ Safety and traffic issues at drop off and pick up times</li> </ul>

**GRAY OPTION** *Estimated capital work.*

<b><i>Pre-K-4</i></b>				
<b>SCHOOL</b>	<b>CURRENT CLASSROOMS</b>	<b>CLASSROOM INCREASE VIA RENOVATIONS</b>	<b>NEW CLASSROOMS ADDITIONS</b>	<b>TOTAL CLASSROOM COUNT</b>
BIG FLATS	23	0	0	23
IS	28	0	0	28
RIDGE ROAD	20	0	0	20
<b>TOTAL CAPACITY</b>	<b>71</b>	<b>0</b>	<b>0</b>	<b>71</b>
<b><i>Grades 5-6</i></b>				
<b>SCHOOL</b>	<b>CURRENT CLASSROOMS</b>	<b>CLASSROOM INCREASE VIA RENOVATIONS</b>	<b>NEW CLASSROOMS ADDITIONS</b>	<b>TOTAL CLASSROOM COUNT</b>
MS	29	0	0	29
<b>TOTAL CAPACITY</b>	<b>29</b>	<b>0</b>	<b>0</b>	<b>29</b>
<b><i>Grades 7-12</i></b>				
<b>SCHOOL</b>	<b>CURRENT CLASSROOMS</b>	<b>CLASSROOM INCREASE VIA RENOVATIONS</b>	<b>NEW CLASSROOMS ADDITIONS</b>	<b>TOTAL CLASSROOM COUNT</b>
HIGH SCHOOL	64	0	0	64
<b>TOTAL CAPACITY</b>	<b>64</b>	<b>0</b>	<b>10</b>	<b>64</b>

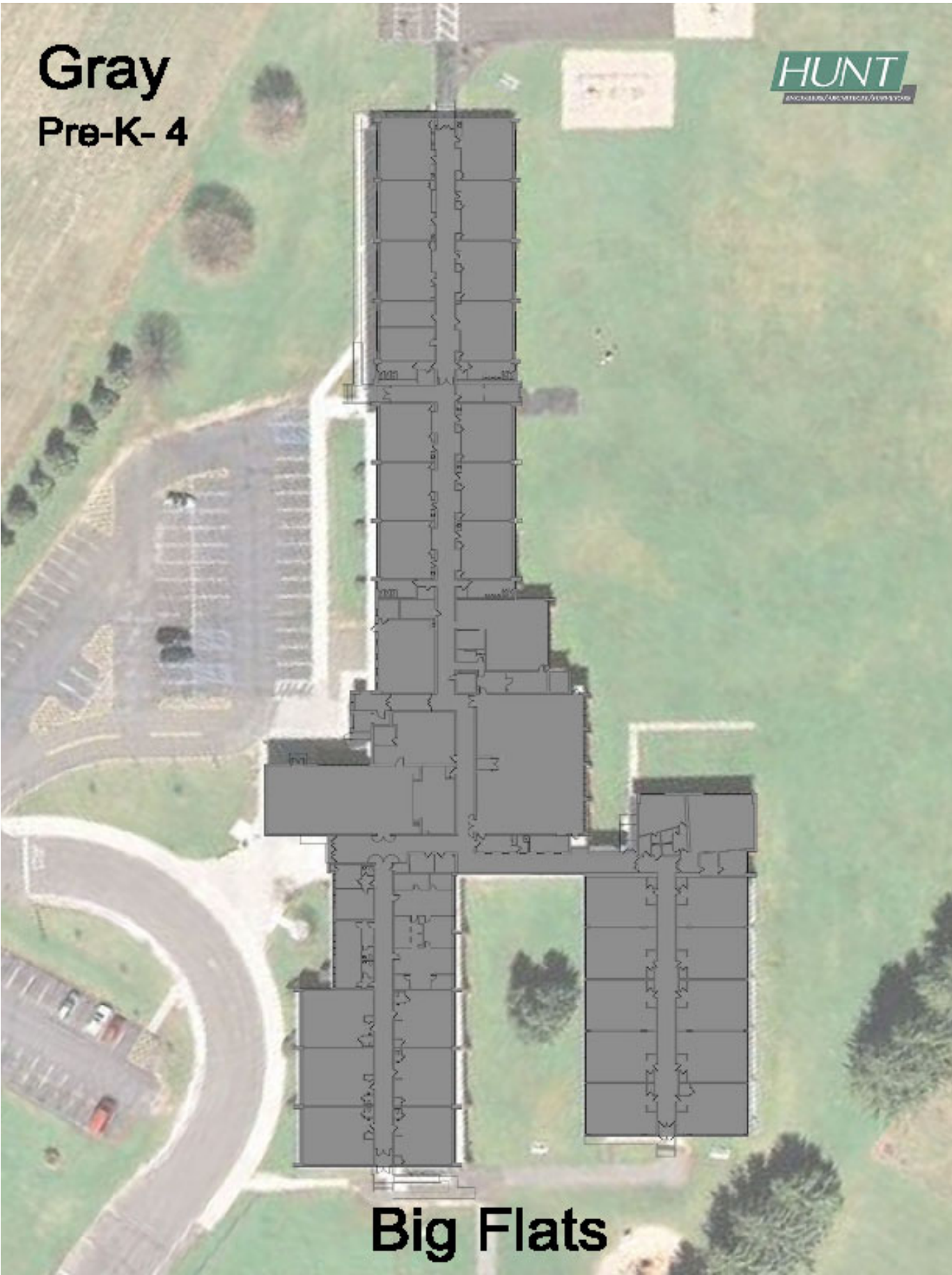
<b>CONCEPT / FACILITY</b>	<b>5 year BCS Items Cost Incl. (Contingencies, inflation &amp; Incidentals)</b>	<b>Square Footage of Renovation</b>	<b>Square Footage of Addition</b>	<b>Reno</b>	<b>Additions</b>	<b>Site</b>	<b>Implementation Project Const. Cost Incl. (Contingencies, inflation, Incidentals)</b>
	<b>\$24,190,530</b>	18,850	20,000	\$5,212,750	\$6,779,500	\$133,333	<b>\$12,125,583</b>
<b>Big Flats Elementary (Pre-K-4)</b>	\$2,542,540						
<b>Broad Street Center Street Elementary (District Office)</b>	\$1,465,100						
<b>Gardner Road Elementary</b>							
<b>Ridge Road Elementary (Pre-K-4)</b>	\$1,872,780						
<b>Middle School (Grades 5-6)</b>	\$2,315,040						
<b>Intermediate School (Pre-K-4)</b>	\$2,315,040						
<b>High School North Wing (Grades 7-12)</b>	\$6,728,540		20,000		\$6,779,500	\$133,333	\$6,912,833
<b>High School South Wing (Grades 7-12)</b>	\$4,832,100	18,850		\$5,212,750			\$5,212,750
<b>Bus Garage</b>	\$1,343,160						
<b>Maintenance Shop</b>	\$316,680						
<b>Field House</b>	\$459,550						

Within this option Gardner Road School would be closed. As part of this closing a BCS cost avoidance has been realized in the table above as follows: Gardner Road School: \$2,846,480; Broad Street: \$3,945,760 Total: \$6,792,240.

		<b>Gray</b>
<u>Closes - Center and Gardner Schools</u>		
<u>Cost Impacts</u>		
• Capital Cost (One Time – State Aided)		\$12,125,583
• Estimated 90% of scope aidable		\$10,913,025
• At 82.9% (Current) State Building Aid		\$9,046,898
• District Local Share of Cost (+ Interest amortized over 15 to 30 years)		<b>+/- \$3,078,685</b>
• <u>Annual Budget Savings</u> (From Dr. Paul M. Seversky study)		<b>\$1,582,908</b>
• Added Operation & Maintenance cost of additions		- \$72,000
• <u>Net Annual Savings</u>		<b>\$1,510,908</b>
• Estimated Savings over a <u>15 year</u> period (Less local share cost of capital project)		<b>\$22,663,620</b>
		

## NOTES

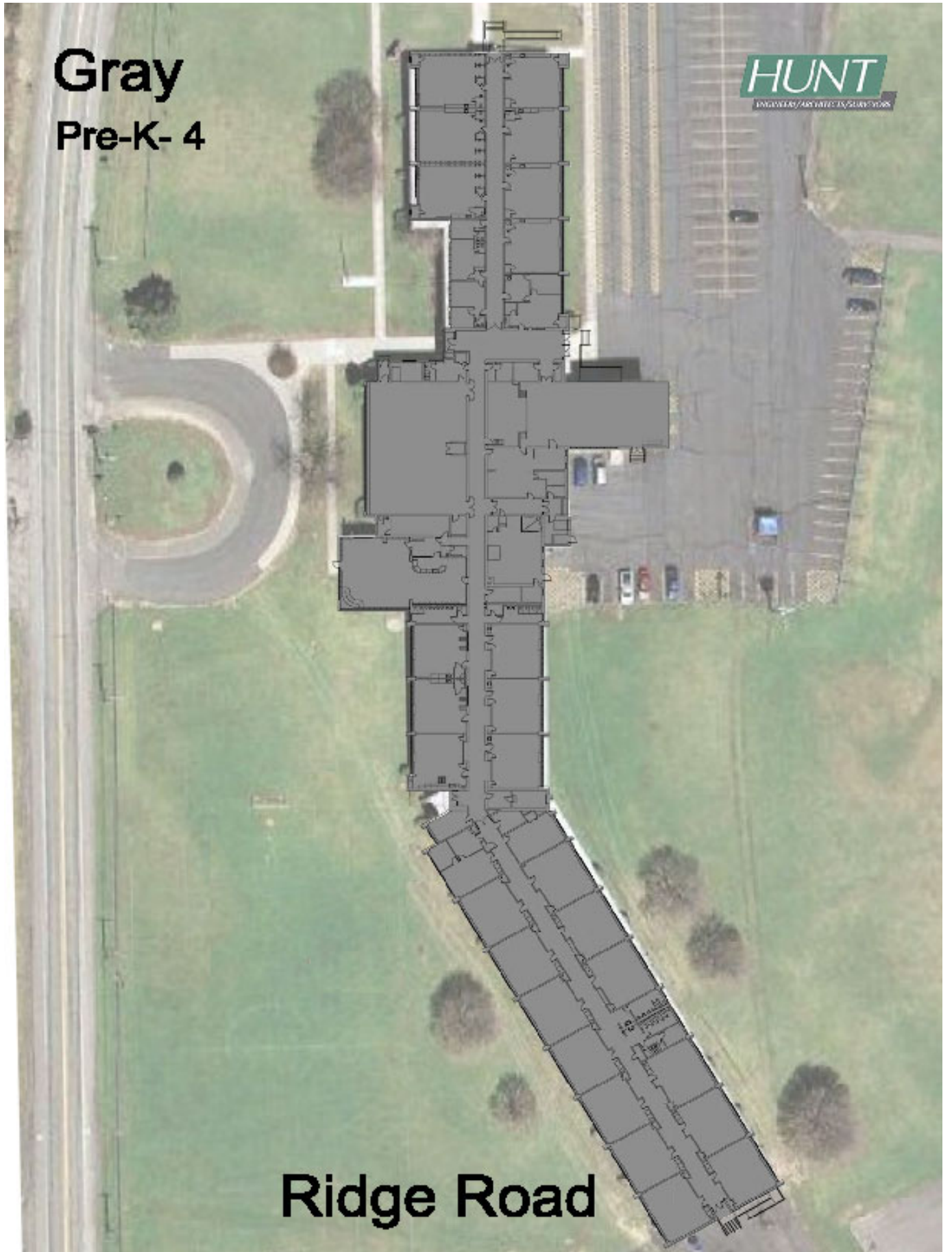
**Gray**  
**Pre-K- 4**



**Big Flats**

# Gray

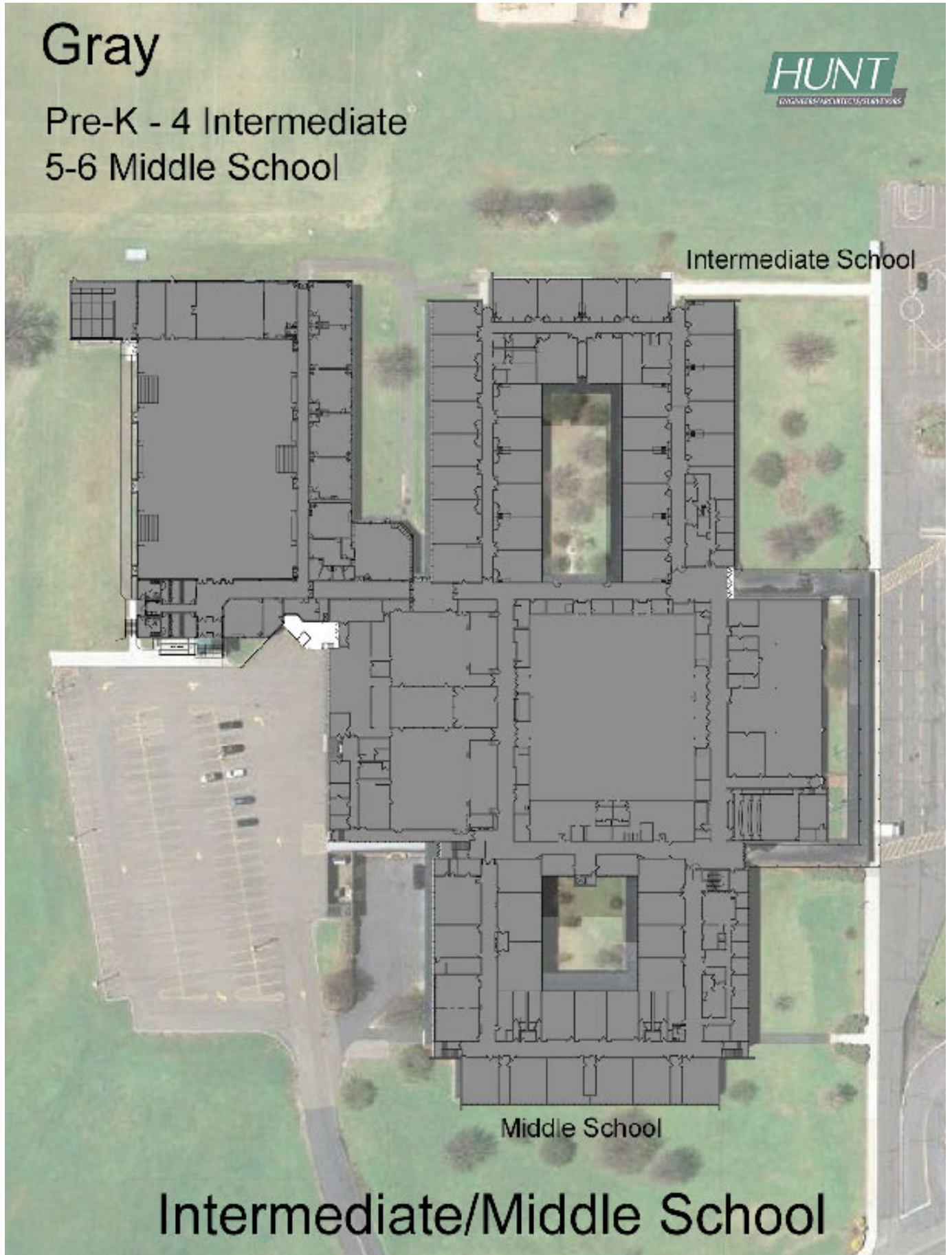
## Pre-K- 4



# Ridge Road

# Gray

Pre-K - 4 Intermediate  
5-6 Middle School



Intermediate School

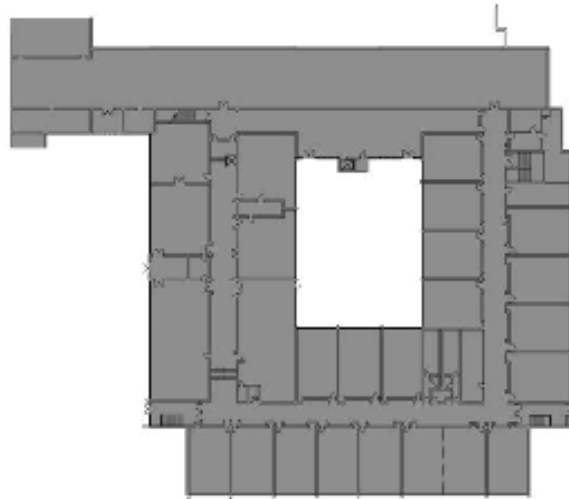
Middle School

Intermediate/Middle School

# Gray



Pre-K - 4 Intermediate  
5-6 Middle School

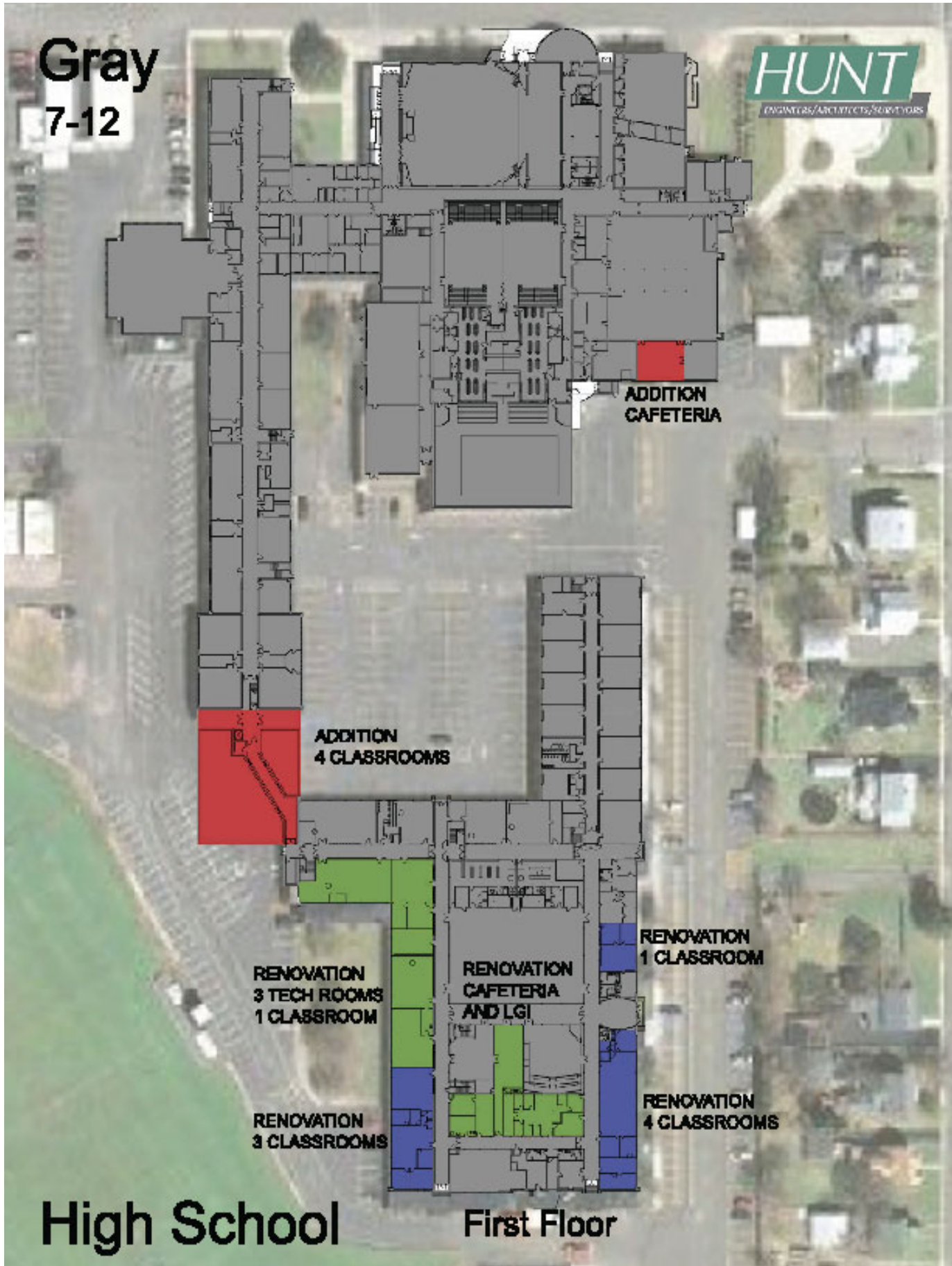


Lower Floor

Intermediate/Middle School



# Gray 7-12



**ADDITION  
CAFETERIA**

**ADDITION  
4 CLASSROOMS**

**RENOVATION  
3 TECH ROOMS  
1 CLASSROOM**

**RENOVATION  
CAFETERIA  
AND LGI**

**RENOVATION  
1 CLASSROOM**

**RENOVATION  
3 CLASSROOMS**

**RENOVATION  
4 CLASSROOMS**

**High School**

**First Floor**

**Gray**

**7-12**

